

Fastening Systems for ROCKWOOL™ Mineral Wool



Grip-Lok® Hurricane Washer

- Large 3" diameter
- Carbon Black UV Stabilizers
- Large dia. Prevents compression of insulation
- Compatible with nails and screws
- EZ-driver prevents screw wobble and overdrive
- Grip-Deck Ceramic Coated Screws for corrosion protection
- Specified for ROCKWOOL™ ci

Plasti-Grip® PMF Anchor

Properties

- For masonry applications
- Easy installation
- Pre-drill with 5/16" masonry bit
- Tap flush with hammer
- Prevents thermal-bridging
- No screws or adhesives required

PMF Size

2"
2 3/4"
3 1/2"
4 1/2"
5 3/8"

Insulation Thickness

1/2" - 3/4"
1" - 1 1/2"
1 1/2" - 2"
2 1/2" - 3"
3 1/2" - 4"

Thermal-Grip® Impaling Fastener

Properties

- Mechanical attachment of mineral wool insulation
- Flexible 2" dia. Washer seals air barrier penetration
- Solid plastic washer reduces thermal-bridging
- Reduces penetrations - attaches wrap and insulation
- For use with sheet and fluid applied air barriers
- Optional retaining disk secures insulation to pin

Grip-Lok® MW Plate

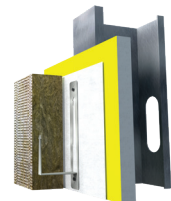
Properties

- Secures up to 5" of mineral wool
- Shoot it, screw it, or nail it
- All substrates including wood, metal and masonry
- Unlike adhesive pins, provides permanent attachment
- Mill galvanized to prevent corrosion
- Curled sides provide rigidity and prevent sharp edges

Centerfire® Insulation Cutting Blade

Properties

- Bullseye centers tool for rapid attachment
- Significantly reduces installed labor cost
- Adjustable depth control prevents overdrive
- Manufacture tested, specified and approved
- Available with 18v Li-ion battery or corded
- For use with up to 3" Grip-Deck® screws



RODENHOUSE



Fastening Systems

PO Box 141184 Zip 49504-1184

974 Front NW Suite #100

Grand Rapids, MI 49504

(616) 454-3100

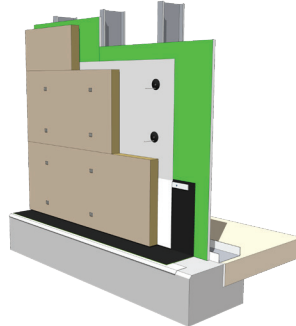
sales@rodenhouse-inc.com

www.rodenhouse-inc.com

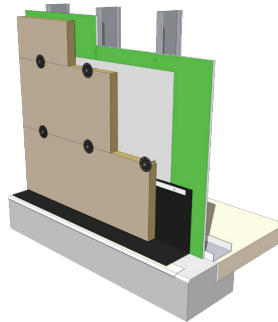
Fastener Spacing for ROCKWOOL™ Mineral Wool



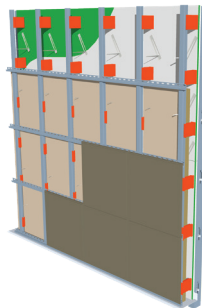
THERMAL-GRIP® Impaling Fastener



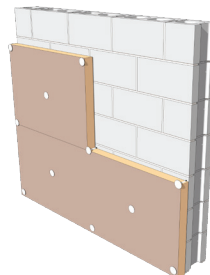
GRIP-LOK® Hurricane Washer



GRIP-LOK® MW Plate



PLASTI-GRIP® PMF



THERMAL-GRIP® Impaling Fastener

1. Optional retaining clip permanently attaches mineral wool
2. Attaches building wrap and mineral wool with air barrier performance.

GRIP-LOK® Hurricane Washer

1. Large 3" dia. Washer prevents insulation compression
2. Can span joints of board to
3. PLASTI-GRIP® PMF Anchor, easy installation, prevents thermal-bridging

GRIP-LOK® MW Plate

1. Secures up to 5" mineral wool
2. Shoot it, screw it, or nail it
3. All substrates including wood, metal, and masonry
4. Permanent attachment
5. Bend the barb flush against the surface of the mineral wool once impaled

PLASTI-GRIP® PMF Anchor

1. Easy installation
2. Pre-drill with 5/16" masonry bit
3. Tap flush with hammer
4. No pins, screws or adhesives required
5. Eliminates thermal-bridging