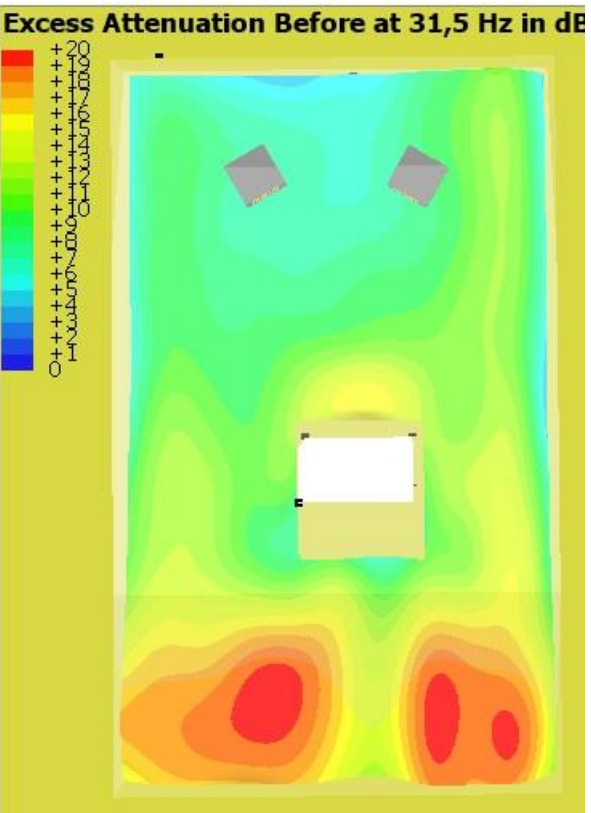
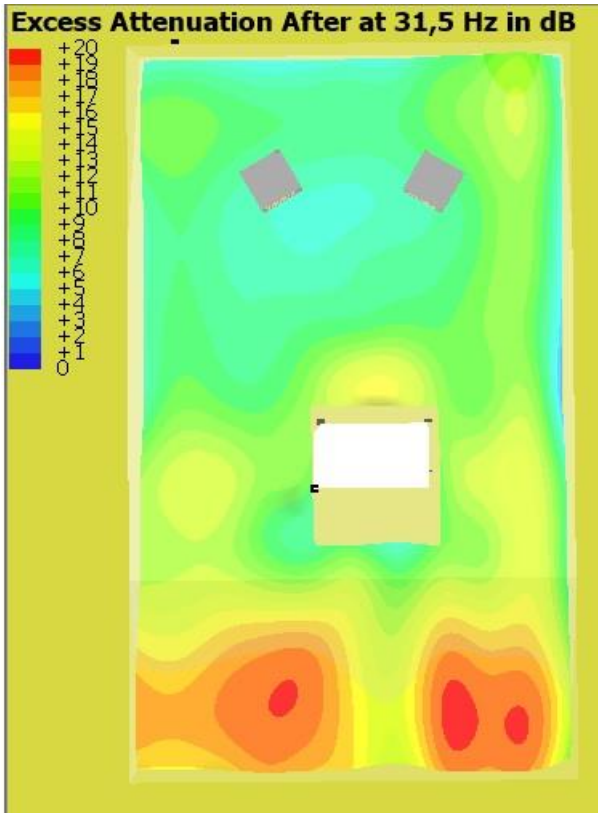
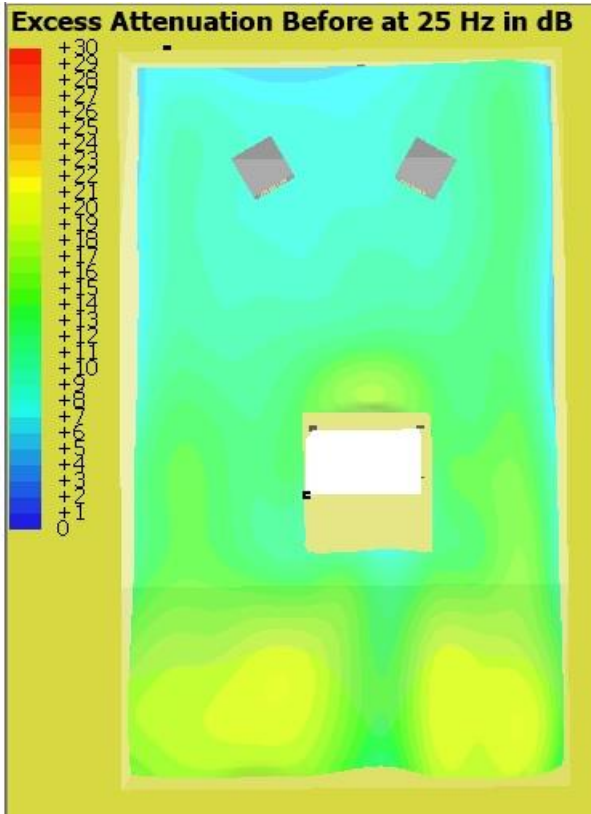
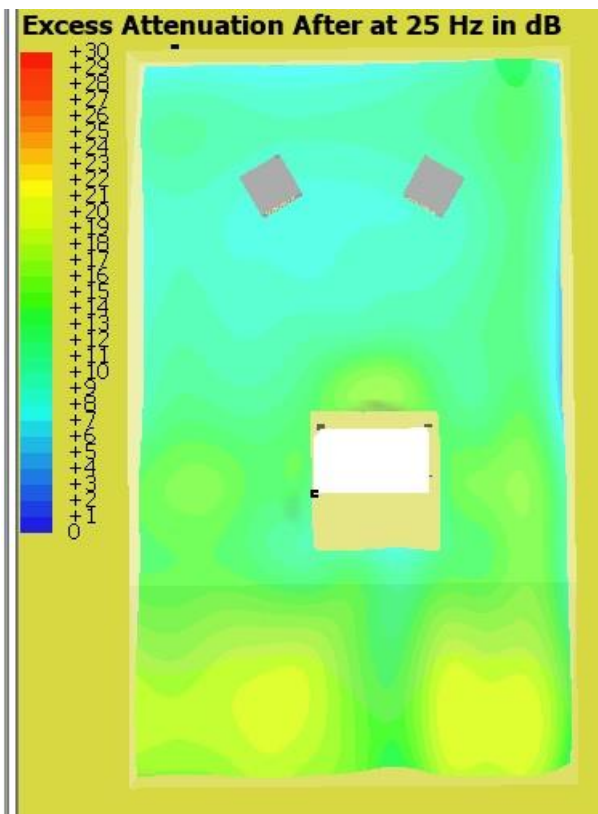
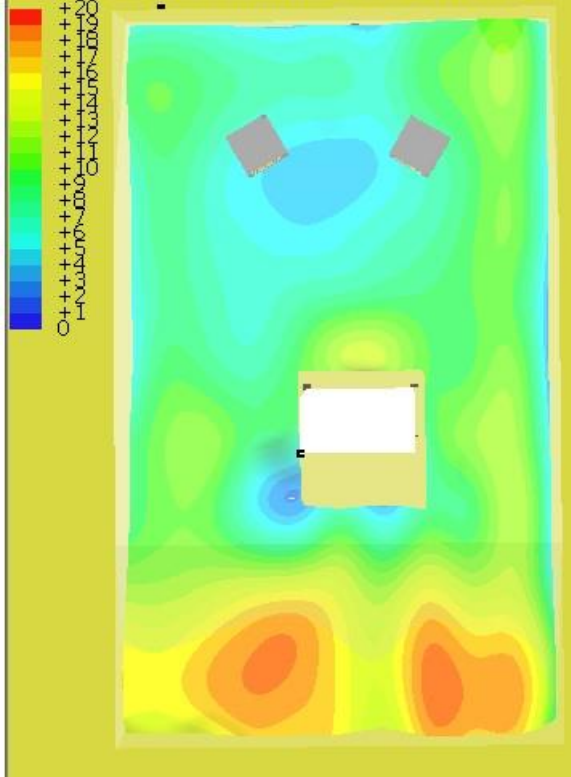


monitor from the rear wall 1,5 m (sloping walls 0,9 m)

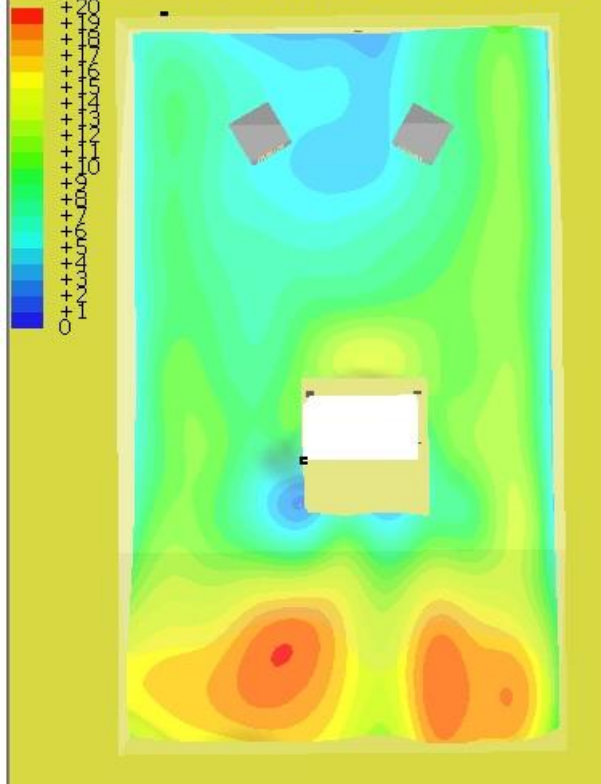
monitor from the rear wall 1,3 m (sloping walls 0,6 m)



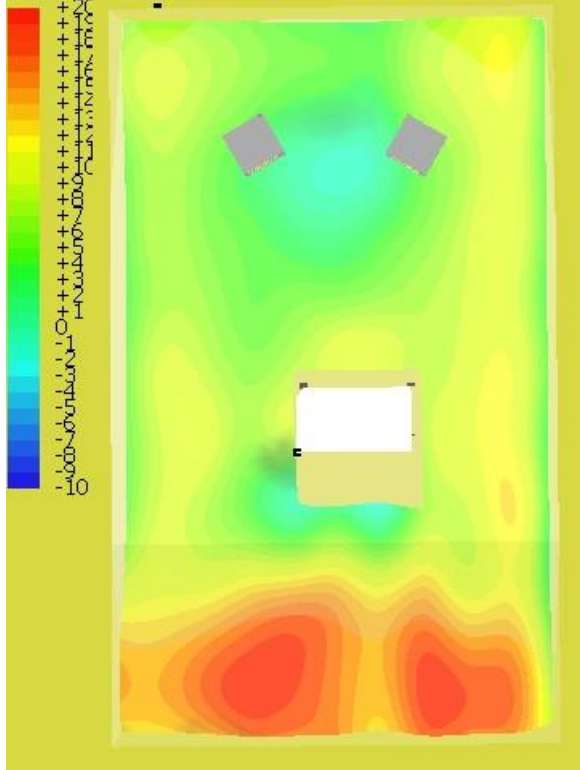
Excess Attenuation After at 40 Hz in dB



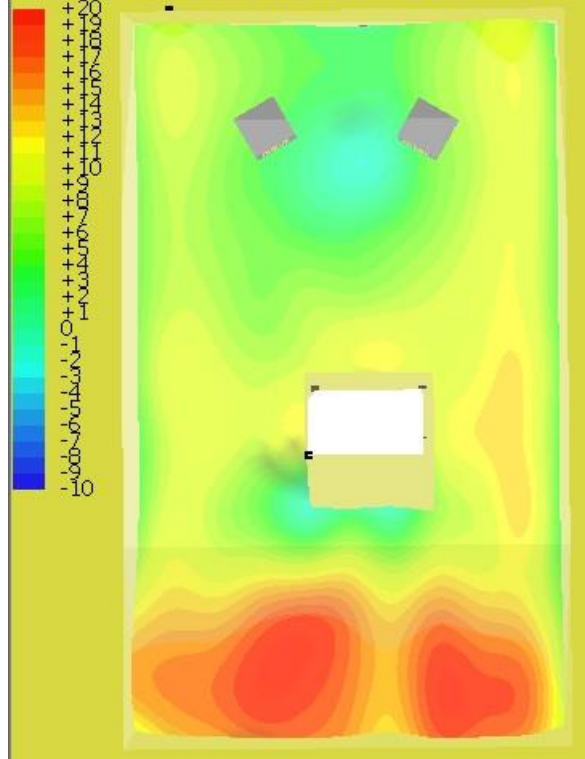
Excess Attenuation Before at 40 Hz in dB



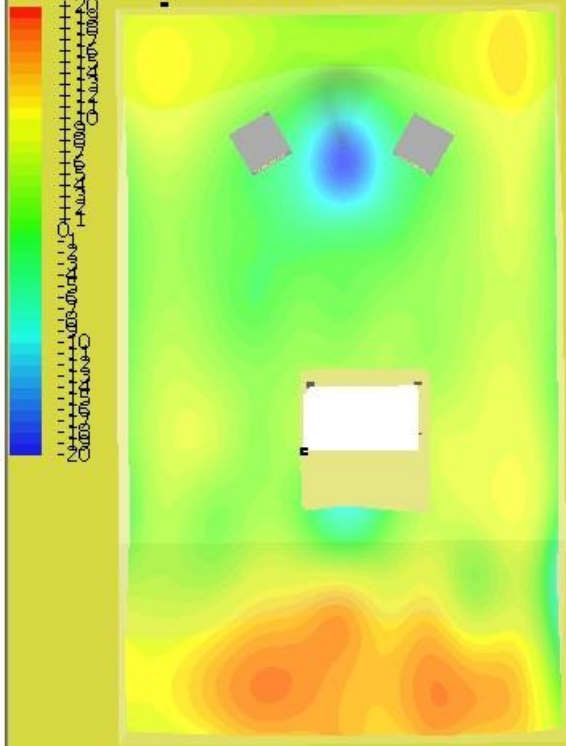
Excess Attenuation After at 50 Hz in dB



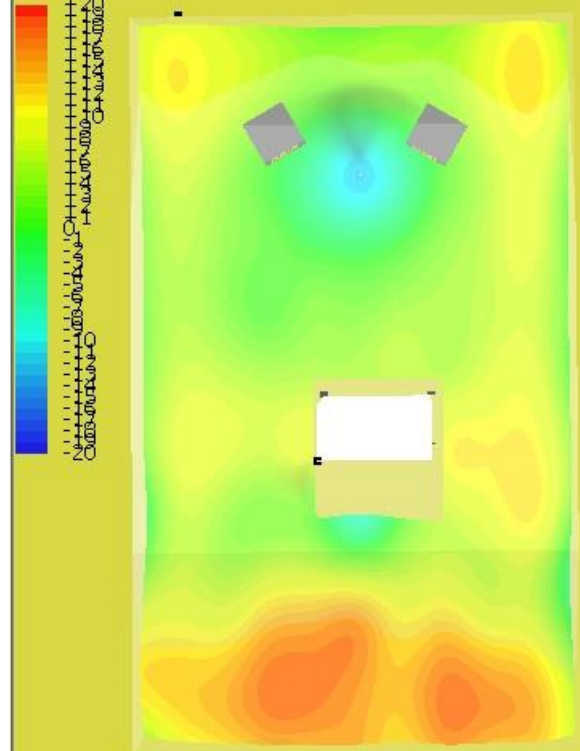
Excess Attenuation Before at 50 Hz in dB



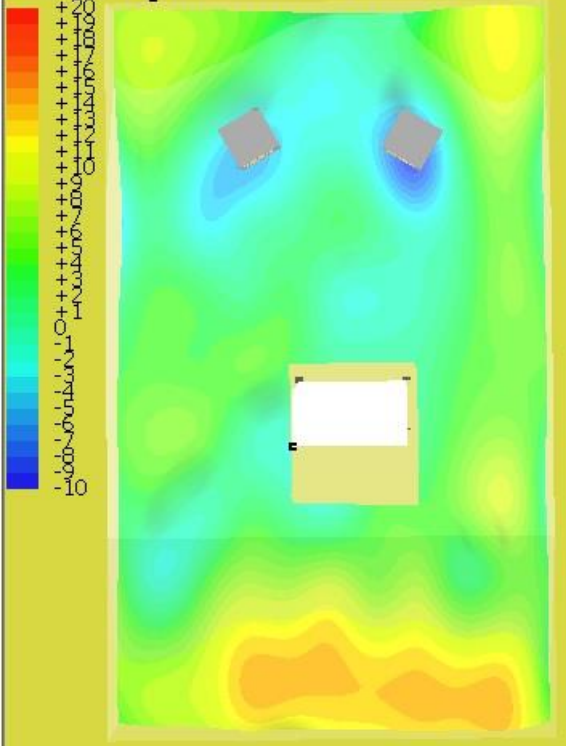
Excess Attenuation After at 63 Hz in dB



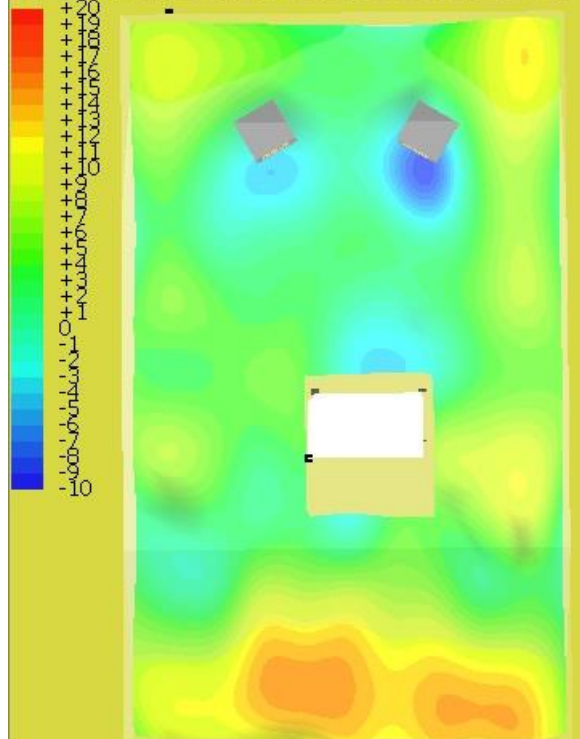
Excess Attenuation Before at 63 Hz in dB



Excess Attenuation After at 80 Hz in dB

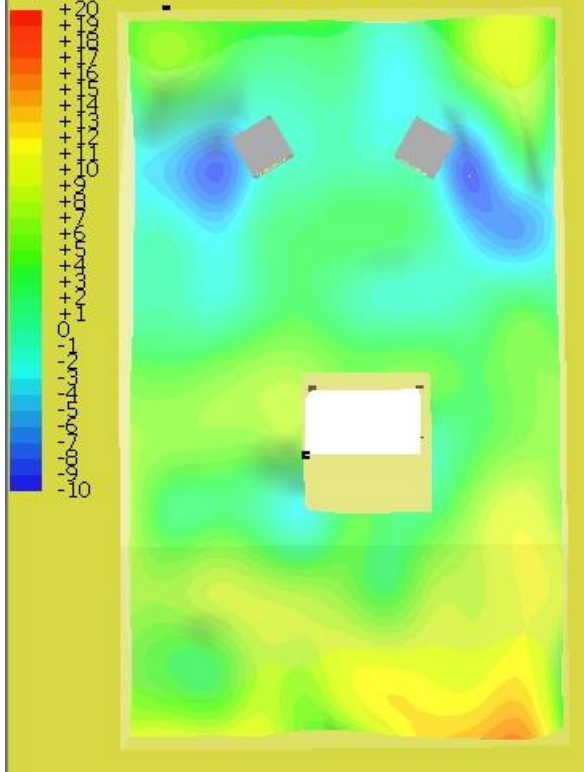


Excess Attenuation Before at 80 Hz in dB

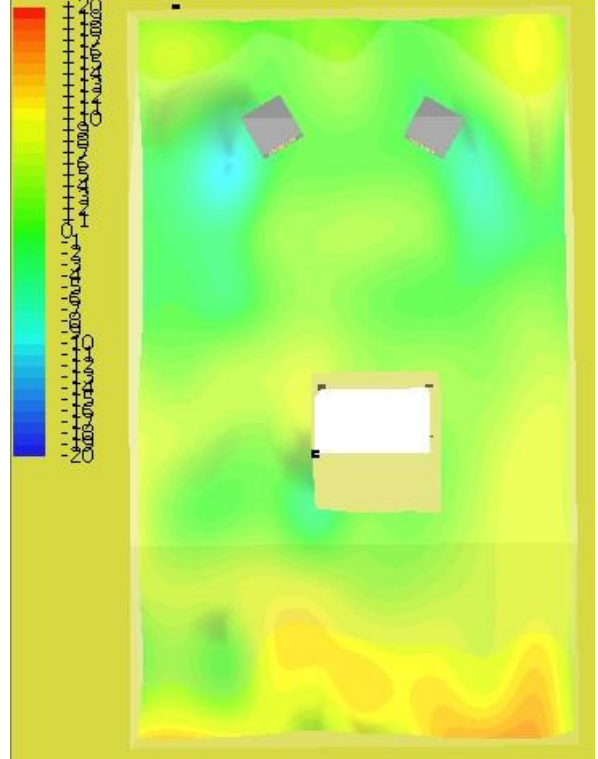




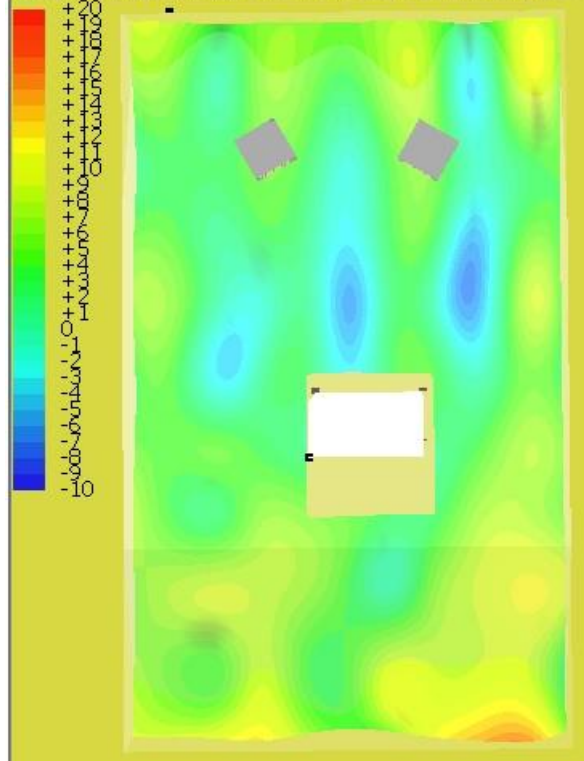
Excess Attenuation After at 100 Hz in dB



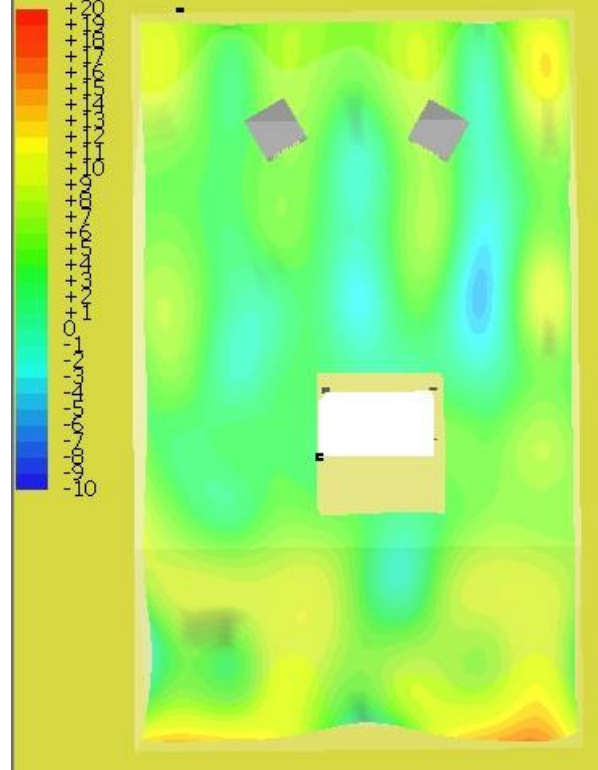
Excess Attenuation Before at 100 Hz in dB



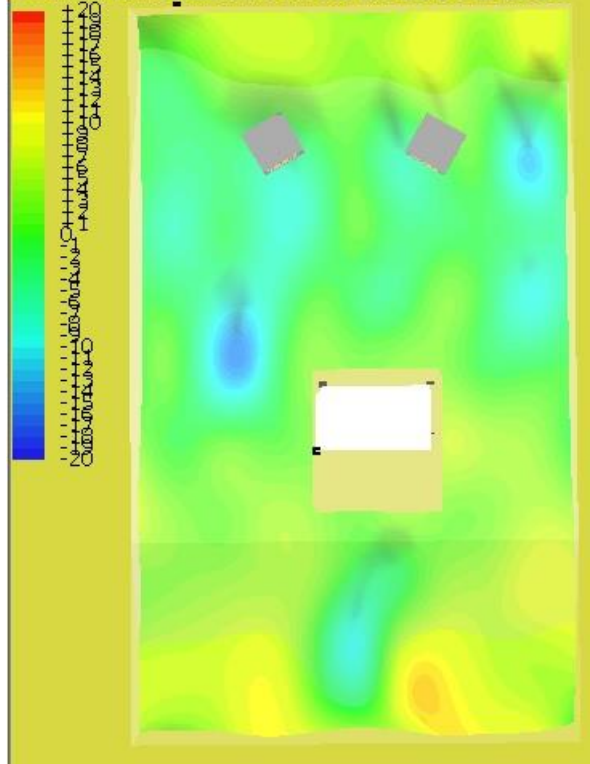
Excess Attenuation After at 125 Hz in dB



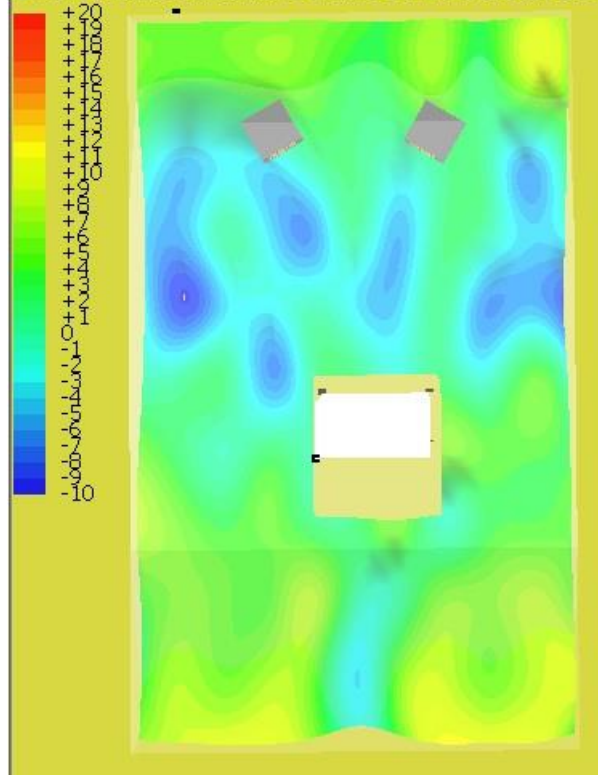
Excess Attenuation Before at 125 Hz in dB



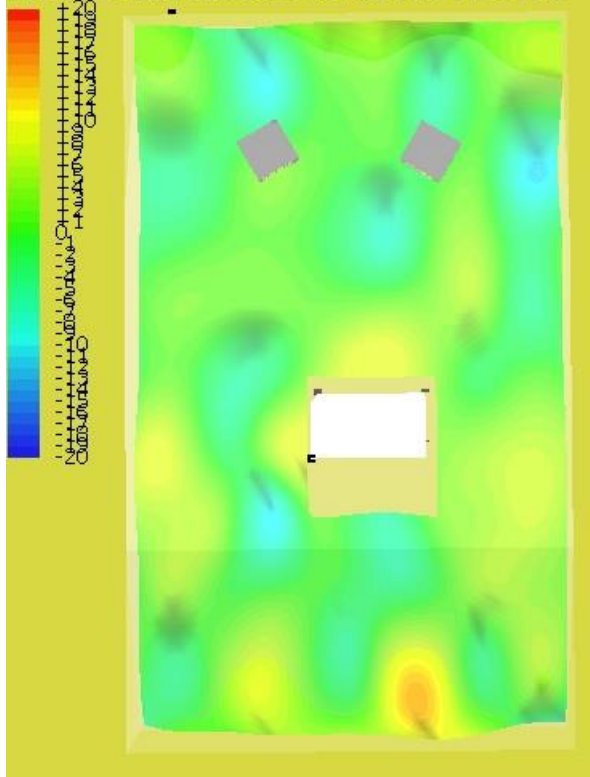
Excess Attenuation After at 160 Hz in dB



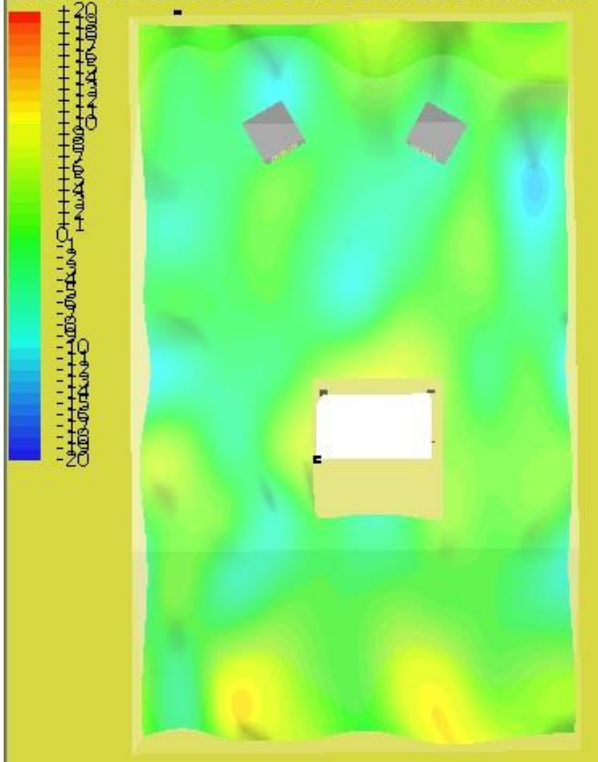
Excess Attenuation Before at 160 Hz in dB



Excess Attenuation After at 200 Hz in dB

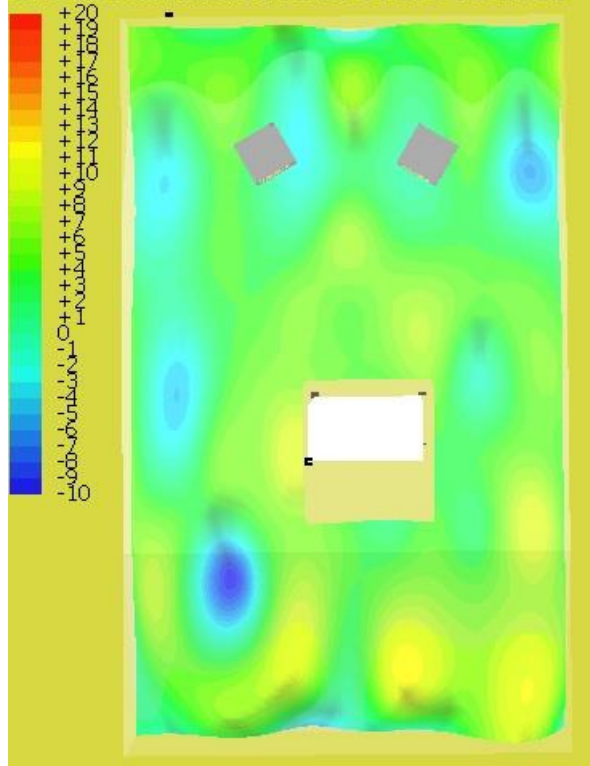


Excess Attenuation Before at 200 Hz in dB

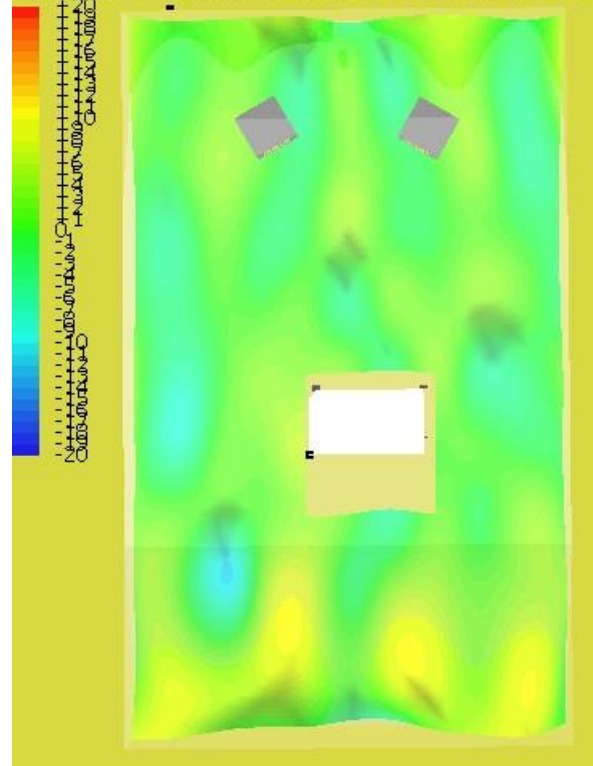




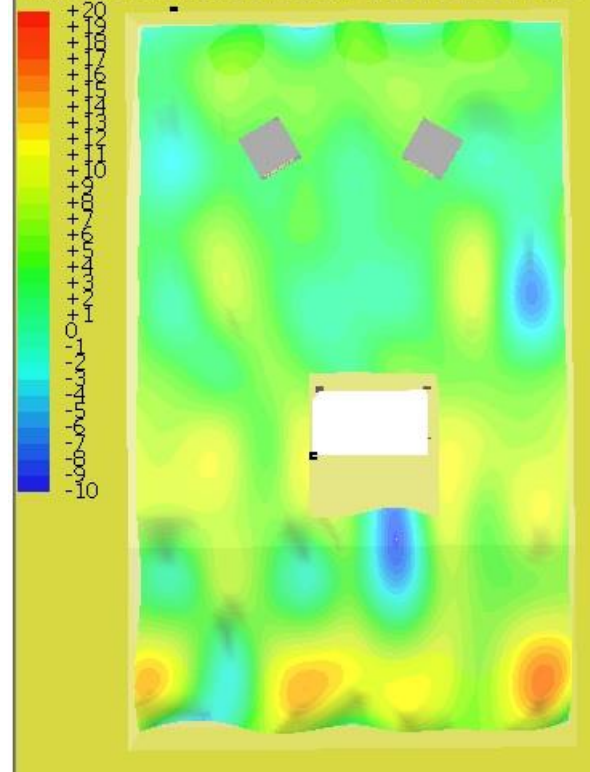
Excess Attenuation After at 250 Hz in dB



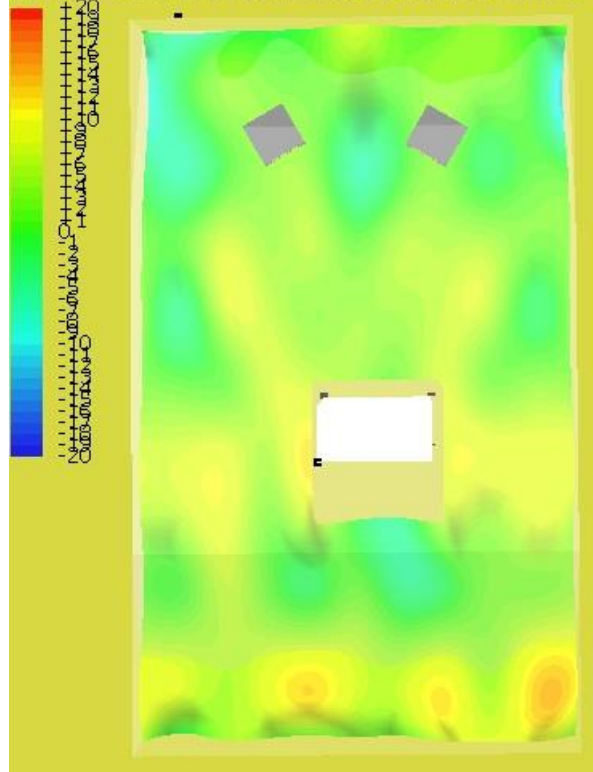
Excess Attenuation Before at 250 Hz in dB



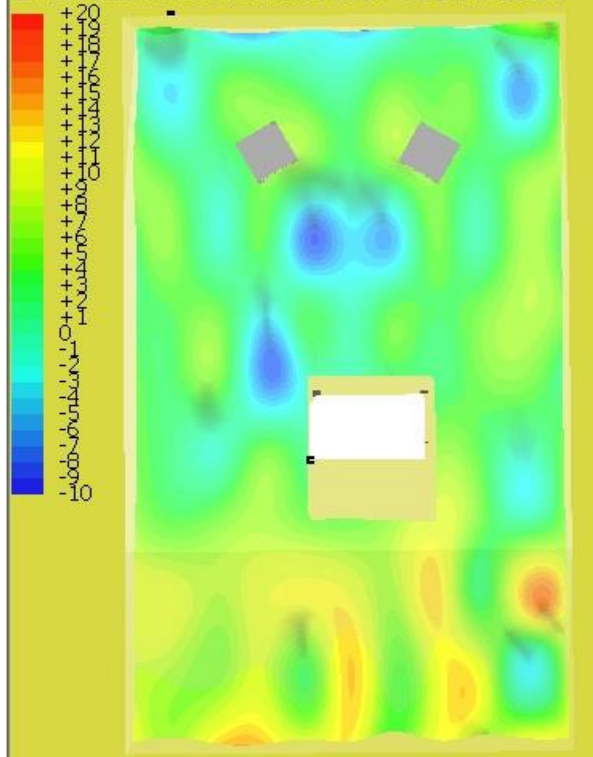
Excess Attenuation After at 315 Hz in dB



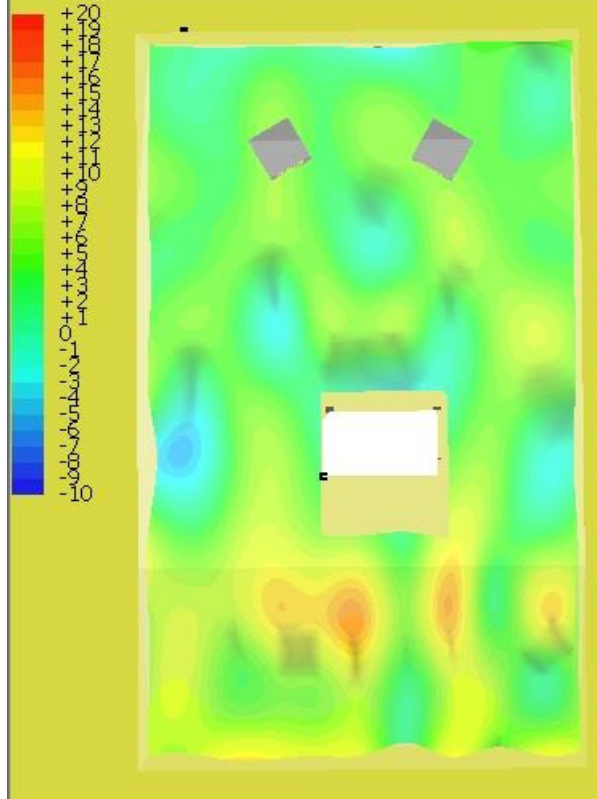
Excess Attenuation Before at 315 Hz in dB



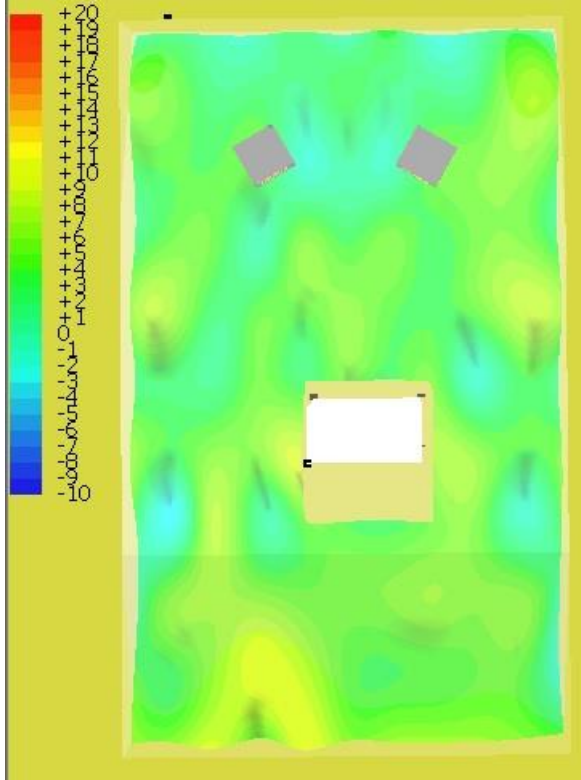
Excess Attenuation After at 400 Hz in dB



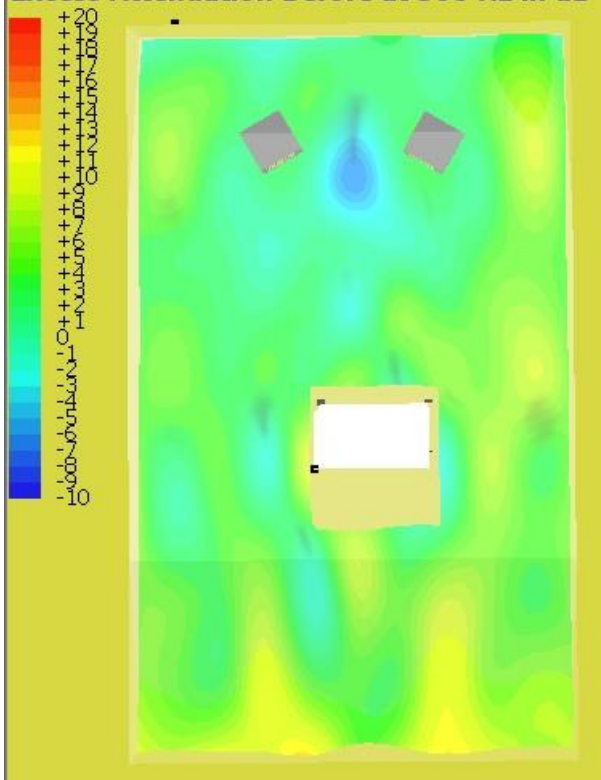
Excess Attenuation Before at 400 Hz in dB



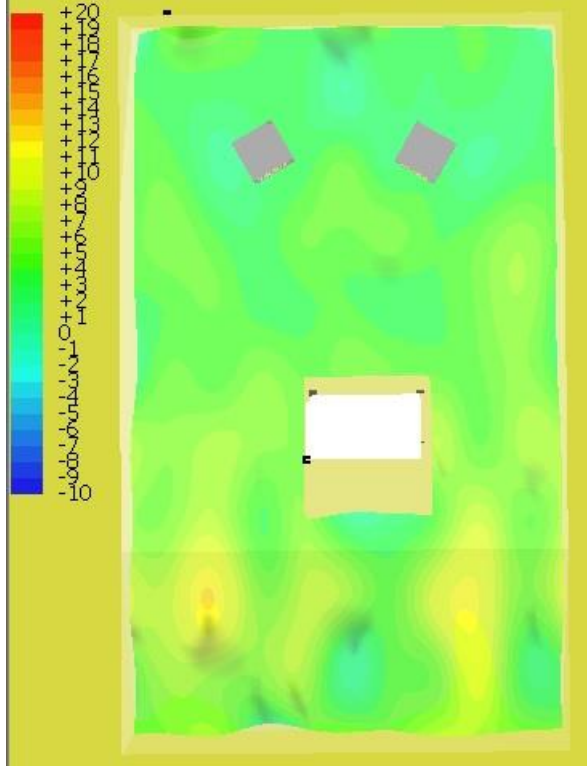
Excess Attenuation After at 500 Hz in dB



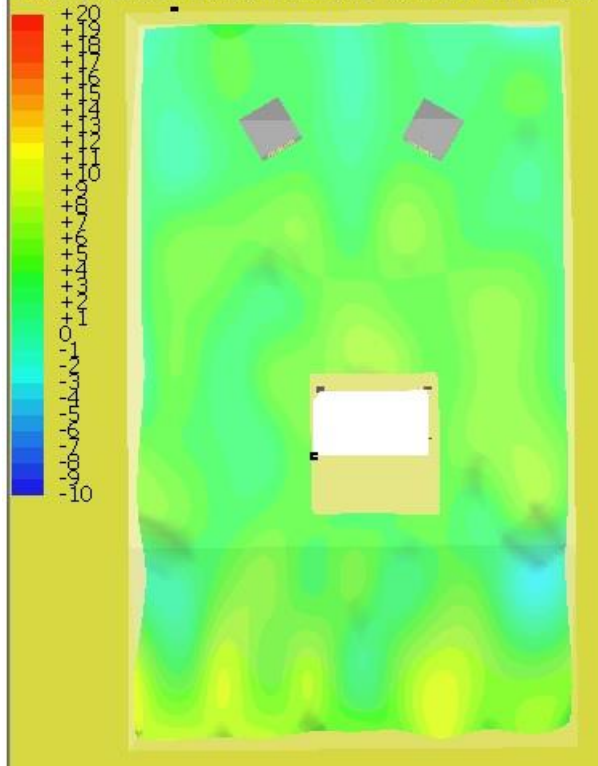
Excess Attenuation Before at 500 Hz in dB



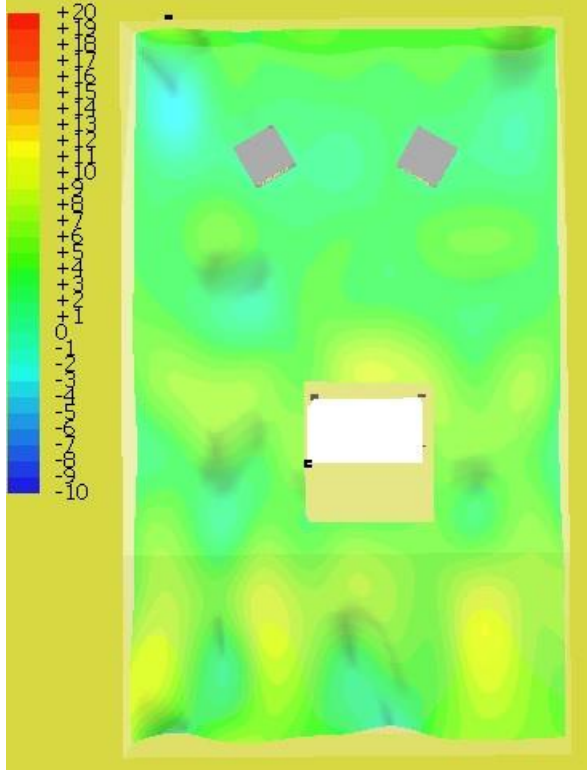
Excess Attenuation After at 630 Hz in dB



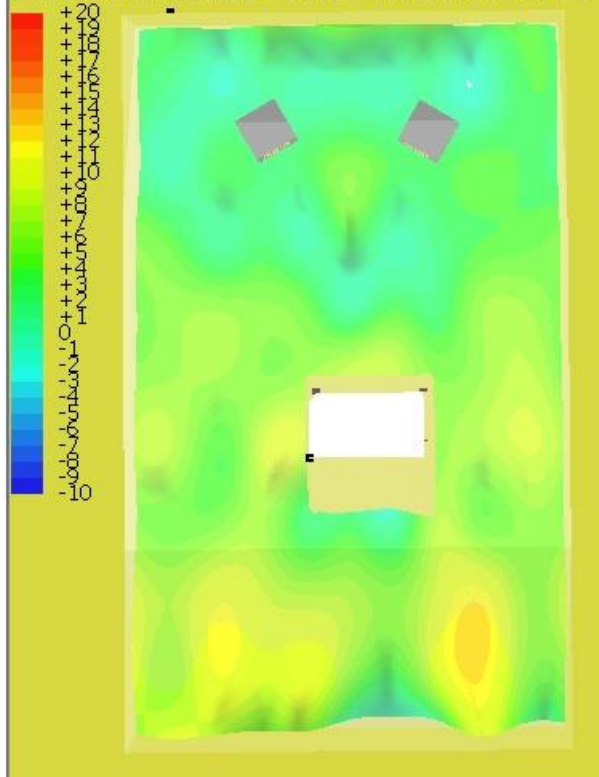
Excess Attenuation Before at 630 Hz in dB



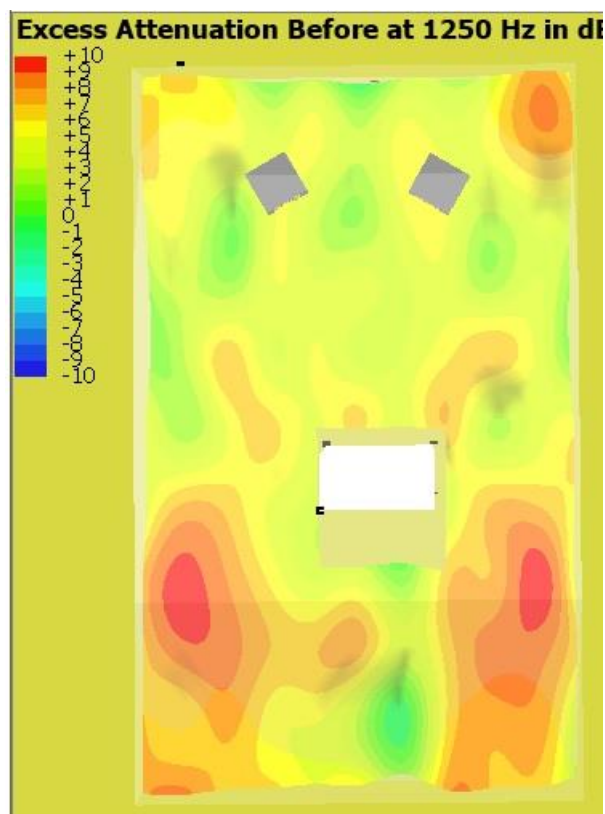
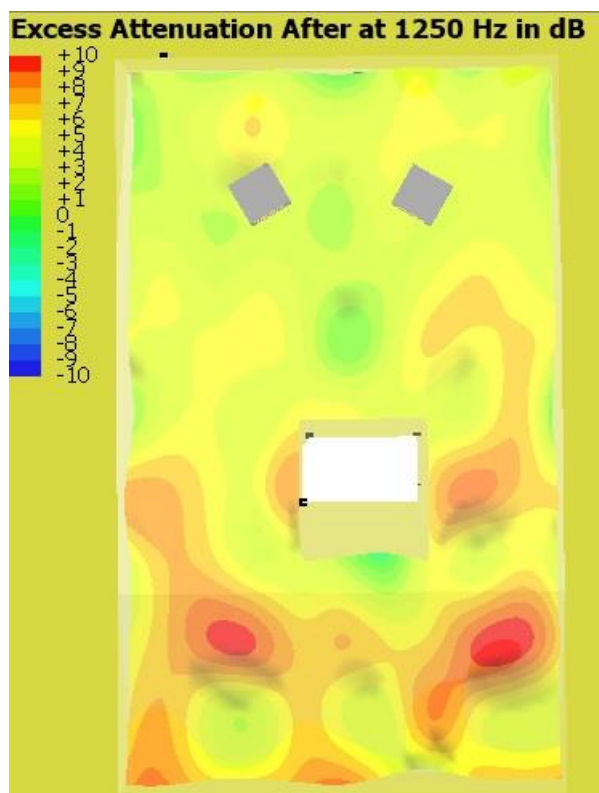
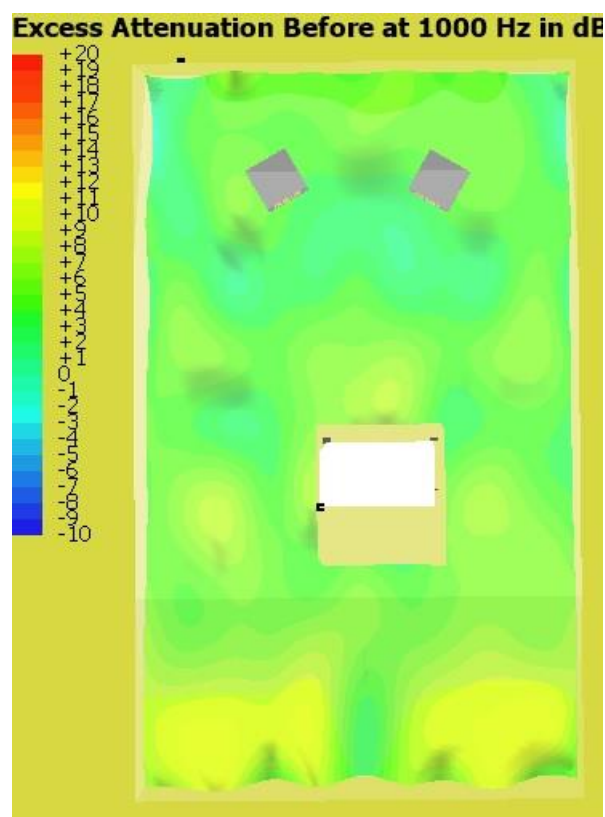
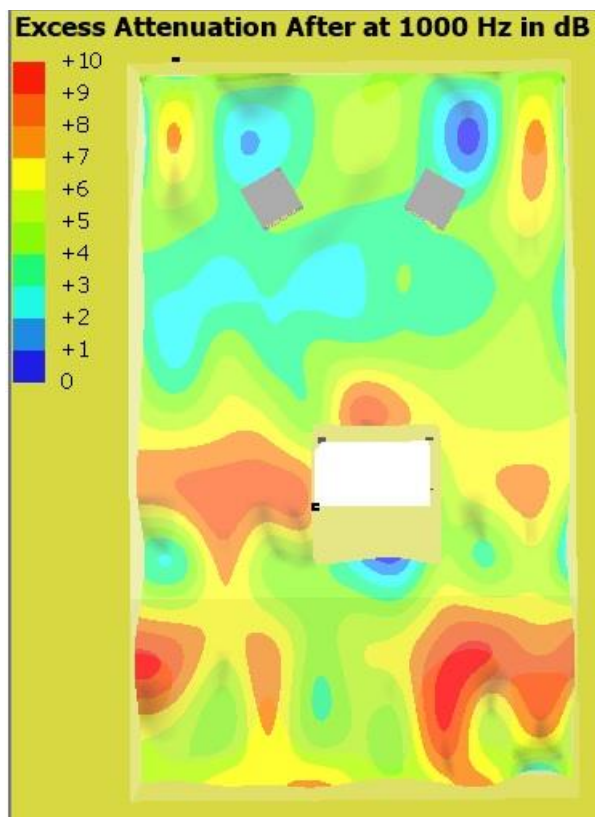
Excess Attenuation After at 800 Hz in dB



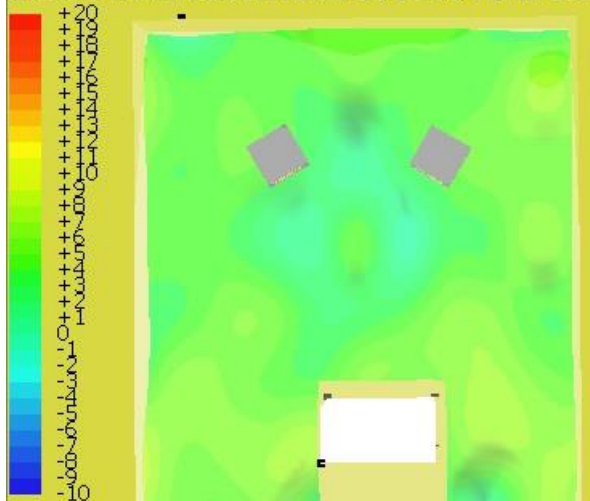
Excess Attenuation Before at 800 Hz in dB



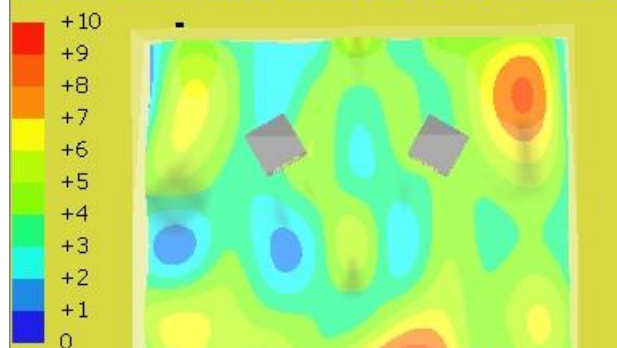




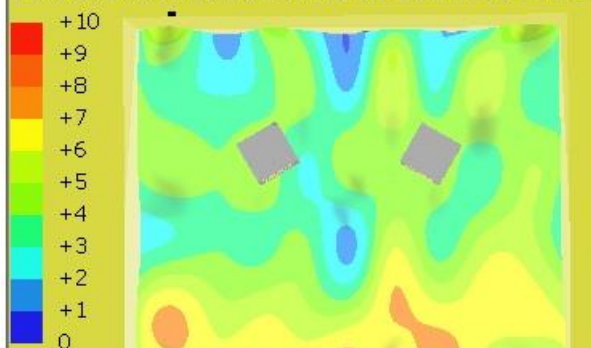
Excess Attenuation After at 1600 Hz in dB



Excess Attenuation Before at 1600 Hz in dB



Excess Attenuation After at 2000 Hz in dB

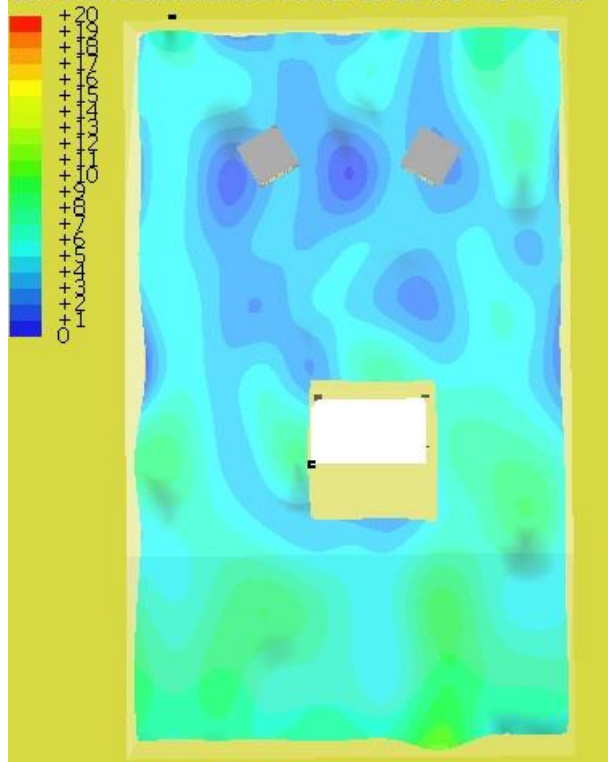


Excess Attenuation Before at 2000 Hz in dB

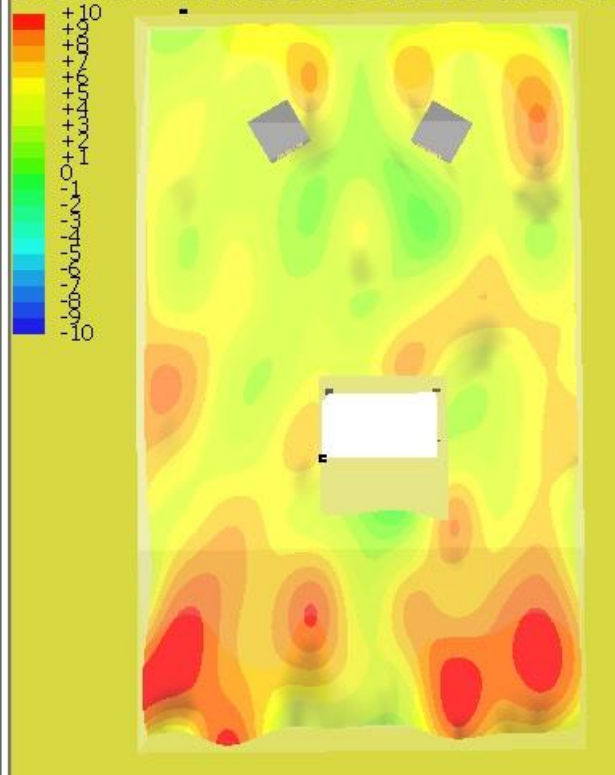




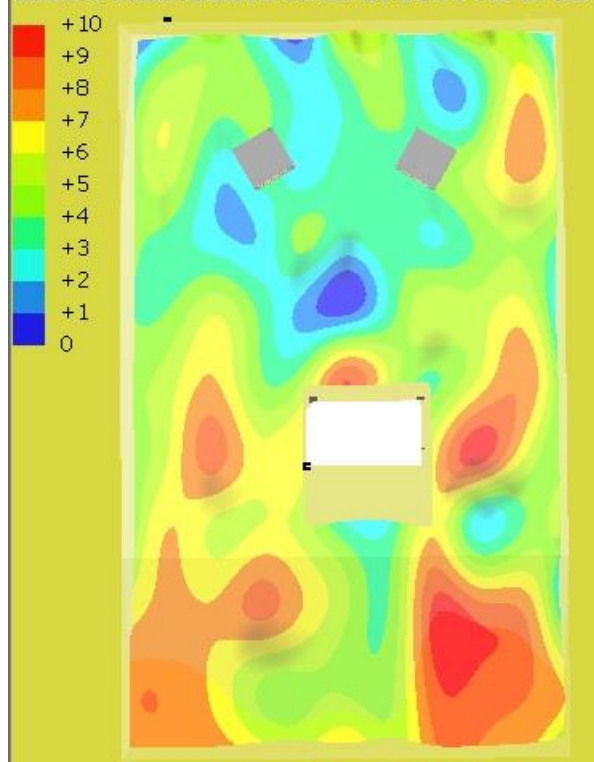
Excess Attenuation After at 2500 Hz in dB



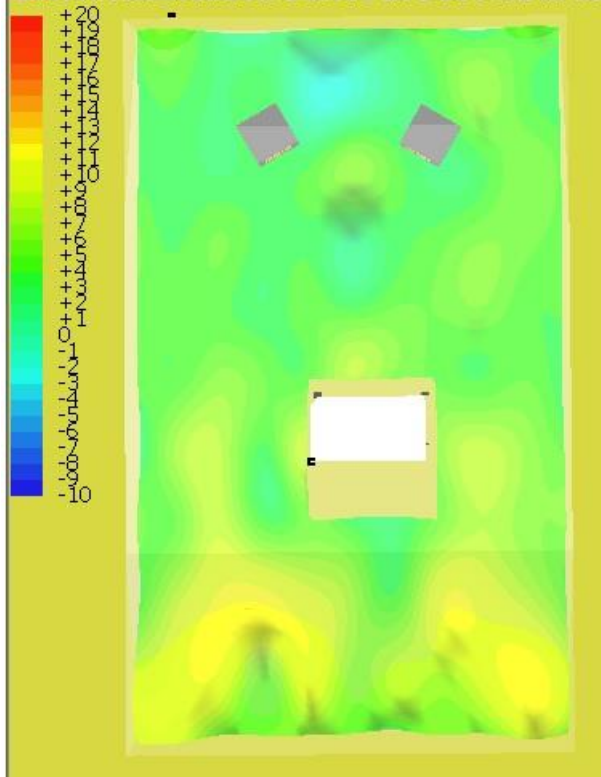
Excess Attenuation Before at 2500 Hz in dB



Excess Attenuation After at 3150 Hz in dB

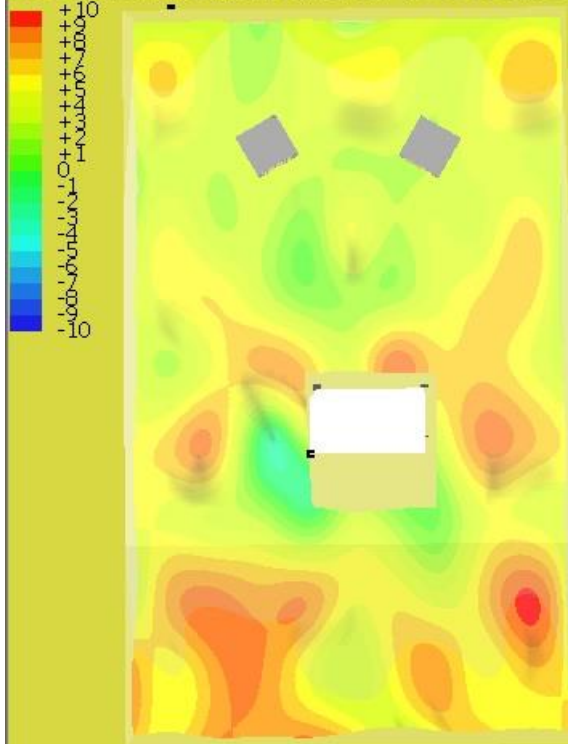


Excess Attenuation Before at 3150 Hz in dB

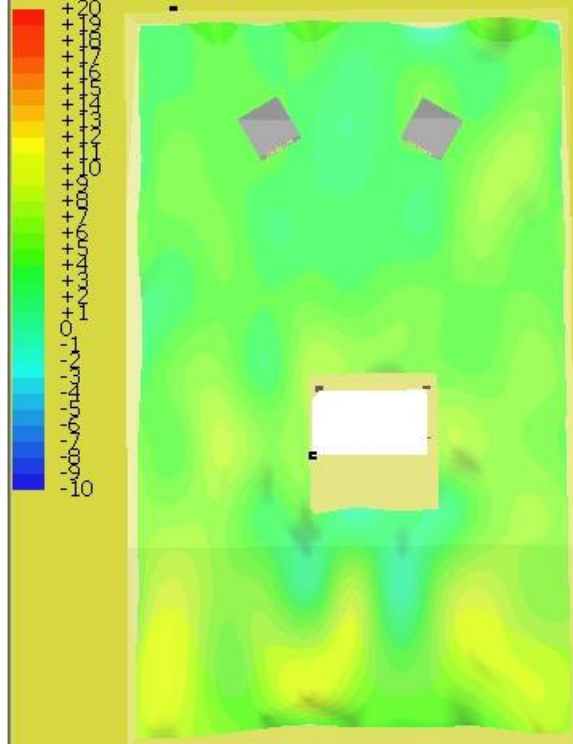




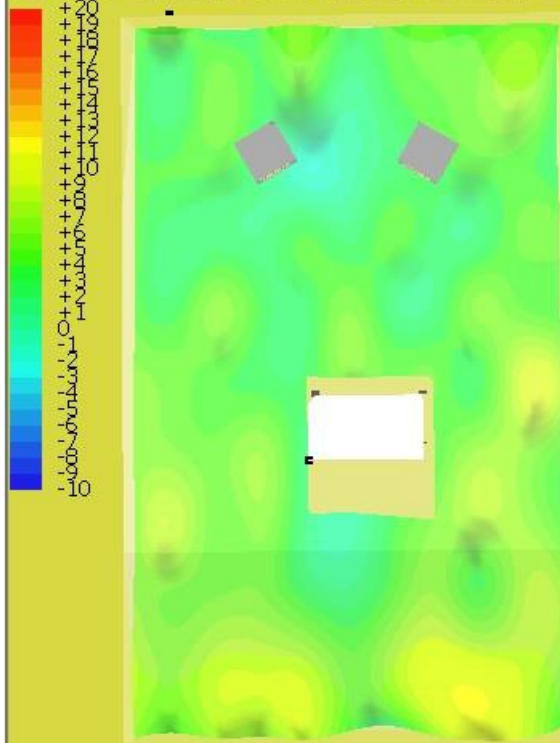
Excess Attenuation After at 4000 Hz in dB



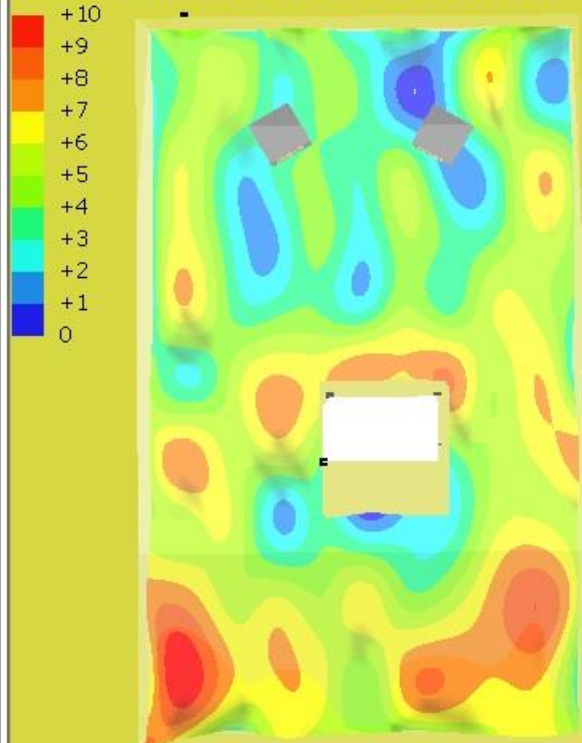
Excess Attenuation Before at 4000 Hz in dB



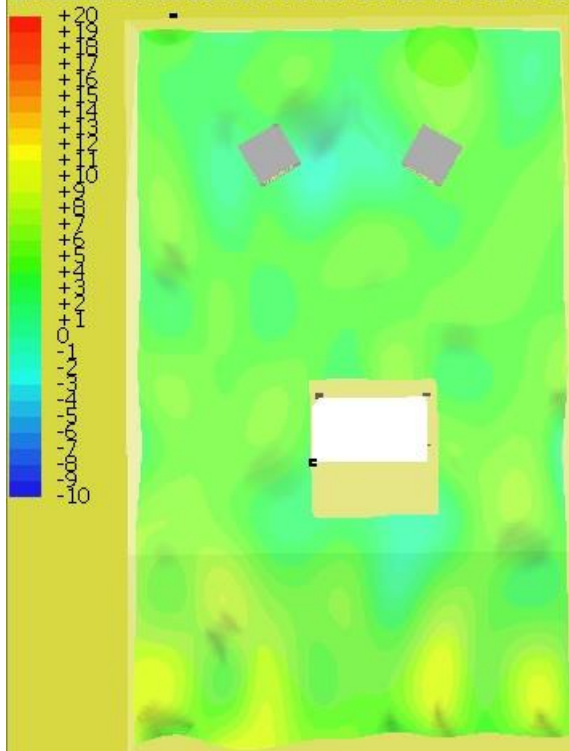
Excess Attenuation After at 5000 Hz in dB



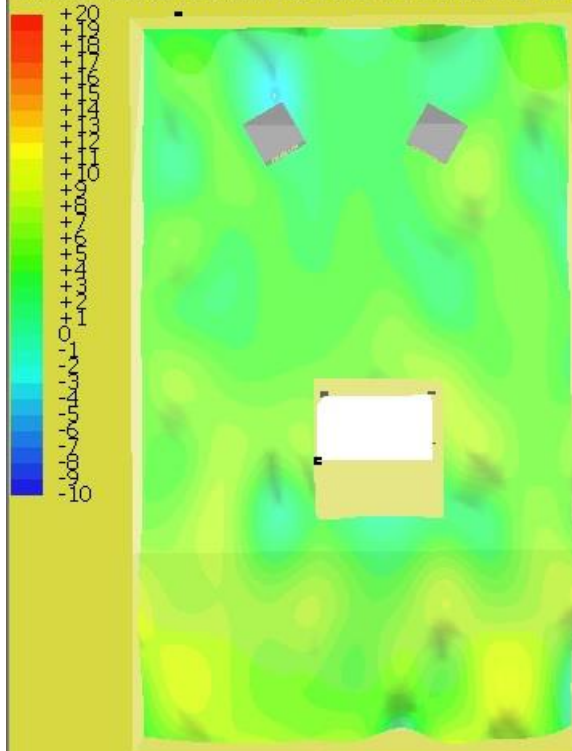
Excess Attenuation Before at 5000 Hz in dB



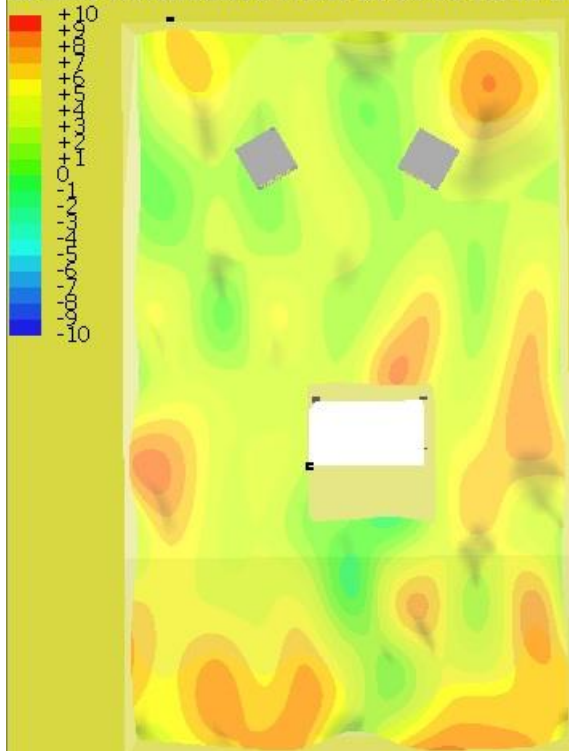
Excess Attenuation After at 6300 Hz in dB



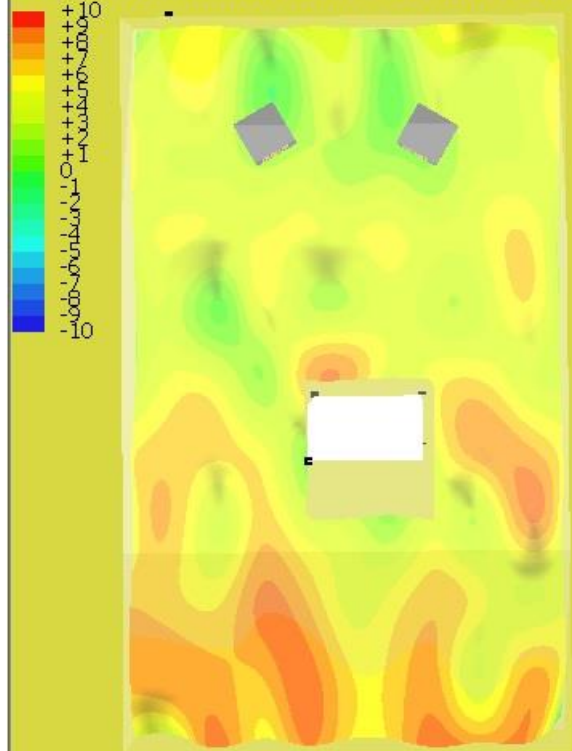
Excess Attenuation Before at 6300 Hz in dB



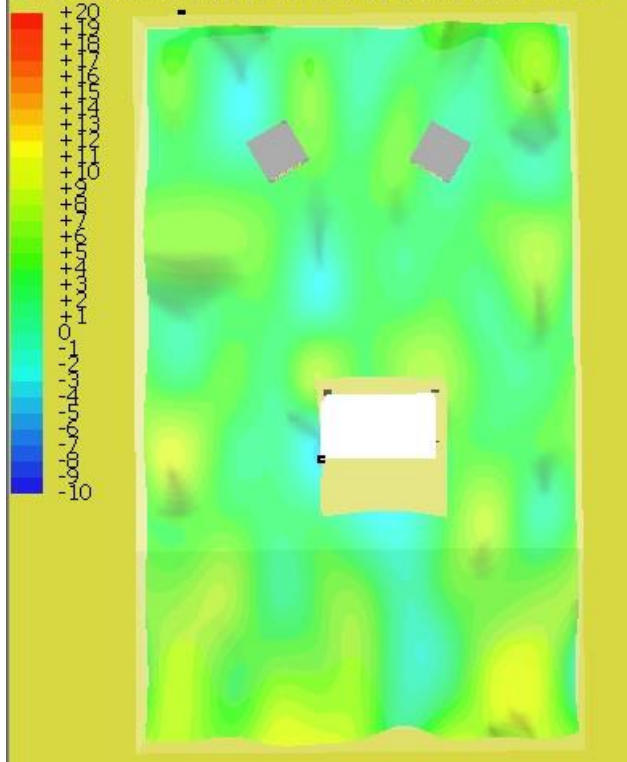
Excess Attenuation After at 8000 Hz in dB



Excess Attenuation Before at 8000 Hz in dB



Excess Attenuation After at 10000 Hz in dB



Excess Attenuation Before at 10000 Hz in dB

